



CH911DH 9" CHIPPER

Hydraulic feed convenience and a 1.1L diesel engine

- 1.1L Kubota diesel engine
- 9" chipping capacity
- Smart Feed™ electronic feed roller control
- Feed roller jack
- Easy access hinged disc cover
- Integrated discharge blower
- 8" discharge chute rotates 360°
- 4 reversible, heat-treated steel chipper blades
- Triple-banded belt drive
- 4" C-channel frame construction
- 4-sided anvil
- 9"X9" feed opening



Options CH911DH & CH922DH

- 71677 2" Ball Coupler



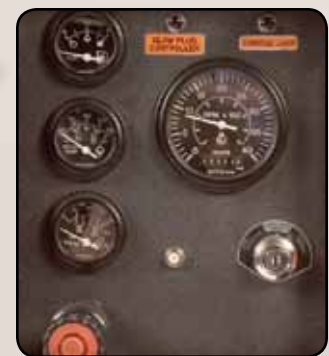
"C"-channel frame construction for extra strength



Hydraulic jack easily raises and lowers the feed roller



Convenient foot pedal easily engages belts



A full set of gauges allows quick monitoring of primary functions



HYDRAULIC FEED

smart → feed



CH922DH 9" CHIPPER

Hydraulic feed convenience with a powerful 2.2L diesel engine

- 2.2L Kubota diesel engine
- 9" chipping capacity
- Smart Feed™ electronic feed roller control
- Feed roller jack
- Easy access hinged disc cover
- Integrated discharge blower
- 8" discharge chute rotates 360°
- 4 reversible, heat-treated steel chipper blades
- Triple-banded belt drive
- 4" C-channel frame construction
- 4-sided anvil
- 9"X9" feed opening



HYDRAULIC FEED

smart → feed

